



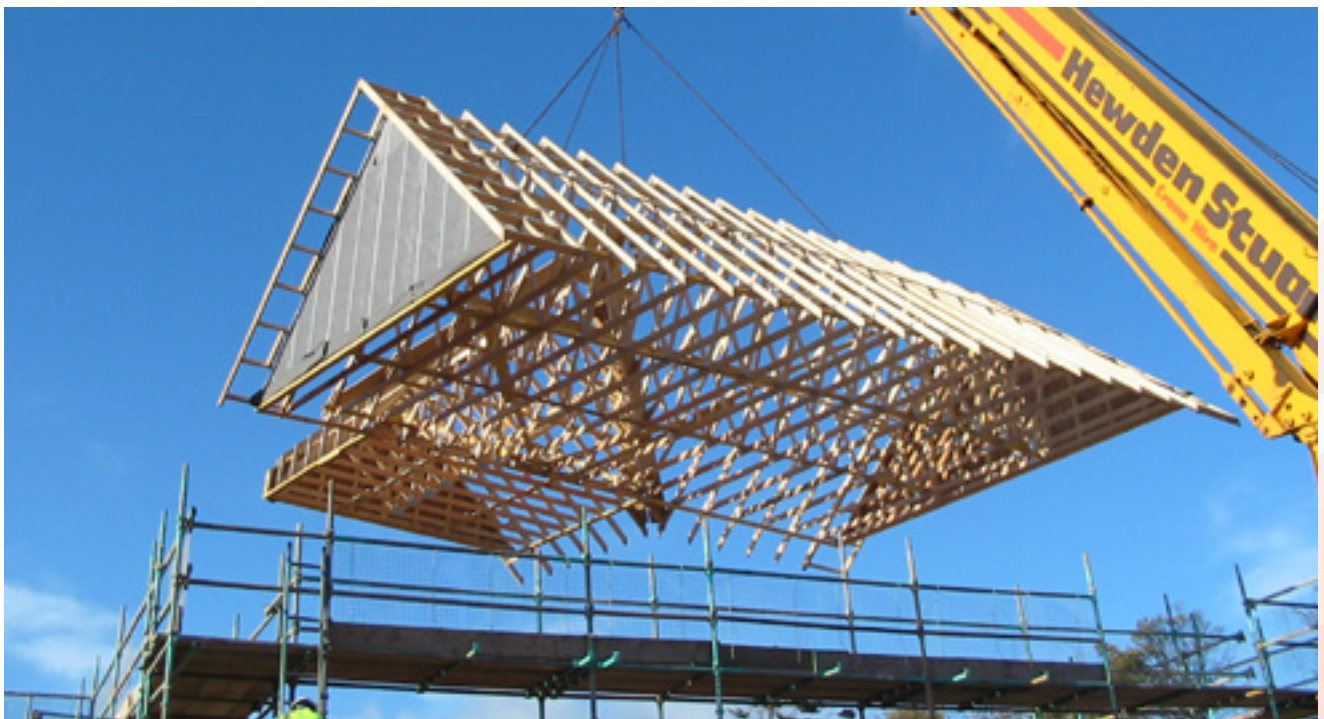
BEAM

## BEAM for Construction Industry

*"Manage, Maintain, Schedule, Utilize, Assign, Rent, Budget, Cut Cost, Increase Productivity"*

### **BEAM: Enterprise Asset & Maintenance Management System is the choice of construction industry.**

Manage your assets (construction equipment, cranes, lifts, trucks, forklifts, heavy-duty cranes, dozer and more). Manage maintenance operations. Measure your maintenance costs. Manage your plant-hire operations. Reduce your operational costs. Utilize your equipment capacity. Increase customer satisfaction. Stop using paper and save environment.



## Here are some operations you can run with BEAM in Construction Industry:

- Manage your construction equipment, trucks, trailers, cranes, lift-trucks, forklifts, material handling equipment, and so on as your assets,
- Manage locations of each moving and fixed assets,
- Use google map and blue-print based asset locators,
- Manage parts of each construction equipment of yours,
- Manage tires; locations, tear&wear and expenditures,
- Manage fuel expenses,
- Manage factory warranty of your construction equipment,
- Manage extended warranty of your equipment,
- Manage inspection dates,
- Manage insurance (liability, collision and so on)
- Manage spare parts at an optimum level,automate the time to re-order,
- Schedule periodic maintenance operations of your construction equipment,
- Schedule preventive maintenance operations,
- Schedule maintenance with your in-house maintenance crew,
- Schedule maintenance with out-sourced service centers,
- Purchasing management of spare parts,
- Manage IT Assets,
- Manage incidents; record, update and report,
- Manage performance of each equipment; planned vs actual operations in terms of hours and mileage/km,
- Record mileage/kilometer, hours of operations;plan, record, compare planned vs actual,
- Manage equipment utilization,
- Assign who will be responsible for each equipment operations and maintenance at various shifts,
- Use check lists for maintenance service and maintenance tasks,
- With an approval workflow, Schedule maintenance with in-house staff or subcontractors,
- Manage your staff schedule on calendar,
- Manage your equipment schedule on calendar,
- Get automatic notifications for maintenance request from staff,
- Manage calls when you have a request from your clients,
- Get automatic notifications for calls from clients,
- Manage renting your own equipment to a third party,
- Manage renting equipment from other sources,

- If you have forms to fill on daily basis for various tasks such as inspections, quality checks and so on, let us digitize all your forms (Let's stop using paper to save environment and trees. Let's digitize your paper based tasks.)
- Generate reports from BEAM for all above tasks (BEAM has more than 10 Thousand ready made reports),
- Receive reports into your email box automatically,
- Integrate with GPRS, barcode, RFID, SCADA systems if needed,
- Enjoy benefits of multi-location, multi-currency and multi-language capabilities,
- Access your equipment information from anywhere in the world as BEAM is web-based,
- Use BEAM's mobile app to run above tasks on the go.
- Let's digitize all your paper based tasks!

## Some References in Construction Industry



- Gulsan Construction Group
- Makyol Construction Group
- Mata Architectural Company and more.

BEAM is an **independent & stand alone software**. In addition; we are happy to announce that BEAM is an **Acumatica certified** and Acumatica integrated software product. [Click here for more information](#)



Click here to see Video on  
**BEAM-Acumatica Foundational Integration**



Contact us to ask your questions and schedule a FREE Demo Session

[CONTACT US](#)

## About Bimser International

Bimser International is an enterprise software maker since 1998. Based in New York, Bimser International is your digital transformation partner. Bimser is Cloud ERP Acumatica Certified ISV Partner, Microsoft Gold Certified ISV Partner and SAP Certified ISV Partner.

To learn more about Bimser International, click [here](#) for a short introductory video.

### Here is the enterprise software product range of Bimser International:

1. **BEAM** [Enterprise Asset & Maintenance Management System](#)
2. **QDMS** [Quality, Risk and Compliance Management System](#)
3. **eBA** [Enterprise Content Management Platform](#)
4. **eBA** [Contract Manager for Acumatica](#)
5. **Ensemble** [Business, Strategy and Performance Management System](#)

Click [here](#) to connect Bimser International YouTube Channel.

Learn more at [bimserint.com](http://bimserint.com)



**Bimser International Corporation**  
*"Enterprise Software Maker Since 1998"*


136 Madison Avenue, 6th Floor, #600  
New York, NY 10016 - U.S.A.

Phone : +1 646 722 3890  
Fax : +1 646 722 3301

LinkedIn : [linkedin.com/company/bimser-international.com](https://www.linkedin.com/company/bimser-international.com)

✉ [bimserint@bimser.com](mailto:bimserint@bimser.com)

🌐 [bimserint.com](http://bimserint.com)

 [Bimser International](#)



**BEAM**